



**GTIP MACHINE
COMPANY**

Services & Consumable Spare Parts

GTIP MACHINE

Yakuplu Mah.Birlik Cad. Beysan san.sit. No: 32 / 44 BEYLİKDÜZÜ, İSTANBUL- TURKEY

Tél: 0090 212 422 57 55 Fax: 0090212 422 57 56 MOB : +90 507 537 18 43

www.gtipmachine.com



ABOUT COMPANY

GTIP Machine has been working as a strategic partner adding value to all its solutions for their partners since the company's inception in 2019. Including their proposed solution to **TURAL GROUP MACHINE**, a subsidiary company to **GTIP GROUP** that was established in 2011 which is the exclusive distributor for 45 factories around Turkey.

In order that we are able to present our country to the world, especially Algeria, Tunisia and Libya, in order that we contribute to their economy. We provide services in a wide range of fields, starting from Technical Consultancies on international Projects up to and including Turnkey projects to build factories, and for industrial machines we supply the required machines and the required supply of spare parts.

GTIP MACHINE

Yakuplu Mah. Birlik Cad. Beysan san. sit. No: 32 / 44 BEYLİKDÜZÜ, İSTANBUL- TURKEY

Tél: 0090 212 422 57 55 Fax: 0090212 422 57 56 MOB : +90 507 537 18 43

www.gtipmachine.com



VISION & MISSION

How The GTIP Machine Works

- ✓ As a GTIP machine company, functioning with an approach principle to provide a sustainable innovative ideas for a solution partnership that enables our customers to achieve their goals. .

Who Works With The GTIP Machine

- ✓ GTIP Machine has built numerous projects, composed of engineering and construction services in a wide range of sectors, covering both private and governmental institutions.
- ✓ Since our establishment, we have worked as solutions provider for more than 100 private and/or public institutions.
- ✓ We have competed in the industrial sectors both locally and internationally, on technical issues specifically issues that requires urgent solutions, and high-level, long-term strategic planning.

GTIP MACHINE

Yakuplu Mah.Birlik Cad. Beysan san.sit. No: 32 / 44 BEYLİKDÜZÜ, İSTANBUL- TURKEY

Tél: 0090 212 422 57 55 Fax: 0090212 422 57 56 MOB : +90 507 537 18 43

www.gtipmachine.com



SECTORS

- **Metal Processing Machinery And Consumable Spare Parts**
- **Metal Injection Machine and Consumables Spare Parts**
- **Plastic Injection Molding Machine Maintenance And Spare Parts**
- **Automation Machine And Consumable Spare Parts**
- **Ventilation, Dust Collection, Compressor, Generator**
- **Hydraulic, Pneumatic**
- **Electric And Electronic**

GTIP MACHINE

Yakuplu Mah.Birlik Cad. Beysan san.sit. No: 32 / 44 BEYLİKDÜZÜ, İSTANBUL- TURKEY

Tél: 0090 212 422 57 55 Fax: 0090212 422 57 56 MOB : +90 507 537 18 43

www.gtipmachine.com

Metal Processing Machinery And Consumable Spare Parts

Press Abkant Machine




NC Tilting Guillotine Shear



STANDARD EQUIPMENTS

- Y1, Y2, X 3 axis
- Control Unit - CNC Easy Bend
- Back Gauge - Motorized & Linear Slide & Ballscrew System Back Gauge
- Fingers - Height Adjustable
- European Type Clamping System
- T-slotted and Stopped Slip Front Arms
- CNC Controlled Motor Crowning (Only for 6 meter machines)
- Special Design - World Class Hydraulic Blocks and Valves
- World Class Electrical Systems

		AE	AS	AS	AS	AS	AS	AS	AS	AS	AS	AS	AS	AS	AS	AS
		3006	3018	3030	3042	3054	3066	3078	3090	3102	3114	3126	3138	3150	3162	3174
Cutting Length	(mm)	3000	3040	3040	3060	3000	4000	4000	4000	4000	4000	6125	6125	6125	6100	6125
Cutting Capacity (Work Speed)	(mm)	8	10	12	18	20	8	10	12	16	20	8	10	12	16	20
Cutting Angle	Centigrade	0.5-2	0.5-2	0.5-2	0.5-2	0.5-2	0.5-2	0.5-2	0.5-2	0.5-2	0.5-2	0.5-2.8	0.5-2.8	0.5-2.8	0.5-2.8	0.5-2.8
Number of Parking Cylinders	pieces	16	17	18	18	18	23	21	21	26	26	31	31	31	31	31
Max Engine	kW	11	22	38	30	37	11	22	38	33	37	11	22	38	48	48
Cuts Per Minute (0.5-2°)	cuts/min	29-12	29-11	17-8	13-6	12-6	23-8	20-11	13-6	13-6	12-6	14-6	11-6	11-6	10-6	10-6
Oil Tank	l	228	380	400	680	750	280	400	480	400	150	470	580	400	750	750
Load	(L)mm	3175	2880	2893	3073	3970	4320	4980	4850	4930	4950	6910	6930	7090	7200	7200
Throat Depth	(L)mm	380	380	380	380	380	380	380	380	380	380	380	380	380	380	380
Width Without Front Support	(L)mm	2000	2020	2180	2040	2370	3000	2220	2000	2330	2490	2290	2490	2490	2600	2700
Weight	(W)mm	2900	2960	3270	3310	3290	3900	3170	3160	3390	3390	3810	3830	3180	3700	3700
Height	(H)mm	2260	2180	2280	2280	2840	2130	2420	2360	2230	2570	2780	2780	2960	2780	2780
Weight	Kg	8300	18300	19400	18800	21800	11100	14800	18000	21000	27000	22300	26000	38900	48000	58000

Metal Processing Machinery And Consumable Spare Parts



Metal Processing Machinery And Consumable Spare Parts

Universal Bandest And Wire Forming Machines



Universal Band And Wire Forming Machines



GTIP Code	GTIP N° Part	Description	Durée de l'alimentation	Max. Largeur de bande	Tolérance d'alimentation	vitesse de la Gamme de formage	Coup de presse	Lubrification	Mo teur	Poids	Tailles
GTIP-1650	G6117 2300001	Machines universelles de formage de bandes et de fils	0 – 150	35 mm	0,02 mm	80 – 200 d/d	10 Tonnes	Automatique	2,2 Kw	2,8 Tonnes	1000 x 1800 x 1800 mm

Code GTIP	Section GTIP N°	déclaration	conducteur	Gamme de taille de Diametre	la Graissage	Poids	Tailles
PIICG -1500	G611823 00001	Bandes et machines de formation de fils	servo	2-4 mm	Otonomie limitée dans le temps	2,4 tonnes	1200 x 2000 x 2200 mm

Metal Processing Machinery And Consumable Spare Parts

Universal Bandest And Wire Forming Machines

Universal Bandest And Wire Forming Machines



GTIP Code	GTIP N° Part	Description	Chauffeur	Gamme de taille de Diametre	Lubrification	Moteur principal	Poids	Tailles
GTIP-2650	G61212300001	Machines universelles de formage de bandes et de fils	Servo	4 – 10 mm (fil en acier inoxydable)	Autonomie limitée dans le temps	15 Kw	8 Tonnes	1300 x 2500 x 5500 mm

GTIP Code	GTIP N° Piece	Description	Tailles de la Gamme de Guidage	Vitesse de la Gamme de formage	Moteur	Poids	Tailles	Vibrateurs d'alimentation
GTIP-500	G61110230001	Machines universelles de formation de bandes et de fils	M2-M3-M4-M5-M6-M8-M10	30 – 100 dk/Pcs.	1,1 Kw	800 kg	800 x 800 x 1600 mm	Produit Piece

Metal Processing Machinery And Consumable Spare Parts

Monorail Crane



Traveling bridge single girder overhead cranes developed for industrial lifting and stacking applications are 1-20 tons, overhead double girder overhead cranes are produced in standard models with different capacities from 3-100 tons or by custom projecting according to applications.

The welds of the bridge beams produced using quality certified sheets are checked with non-destructive methods. Dimensions are controlled according to TS-EN-1090 tolerances.

Metal Processing Machinery And Consumable Spare Parts

Hydraulic Unit and Valves



Trim and Forming Presses



Trim Press;
black sheet, stainless sheet, aluminum, plastic etc. Presses to be used in processing or ceramic plate (isostatic pressing) industries are designed.
Can be integrated with uncoiling line, sheet stacking unit or robot automation
a complete system solution can be developed
Can be configured as single tandem, automatic line or transfer press

Metal Processing Machinery And Consumable Spare Parts

PNEUMATIC CLUTCH ANGRENGED ECCENTRIC PRESS

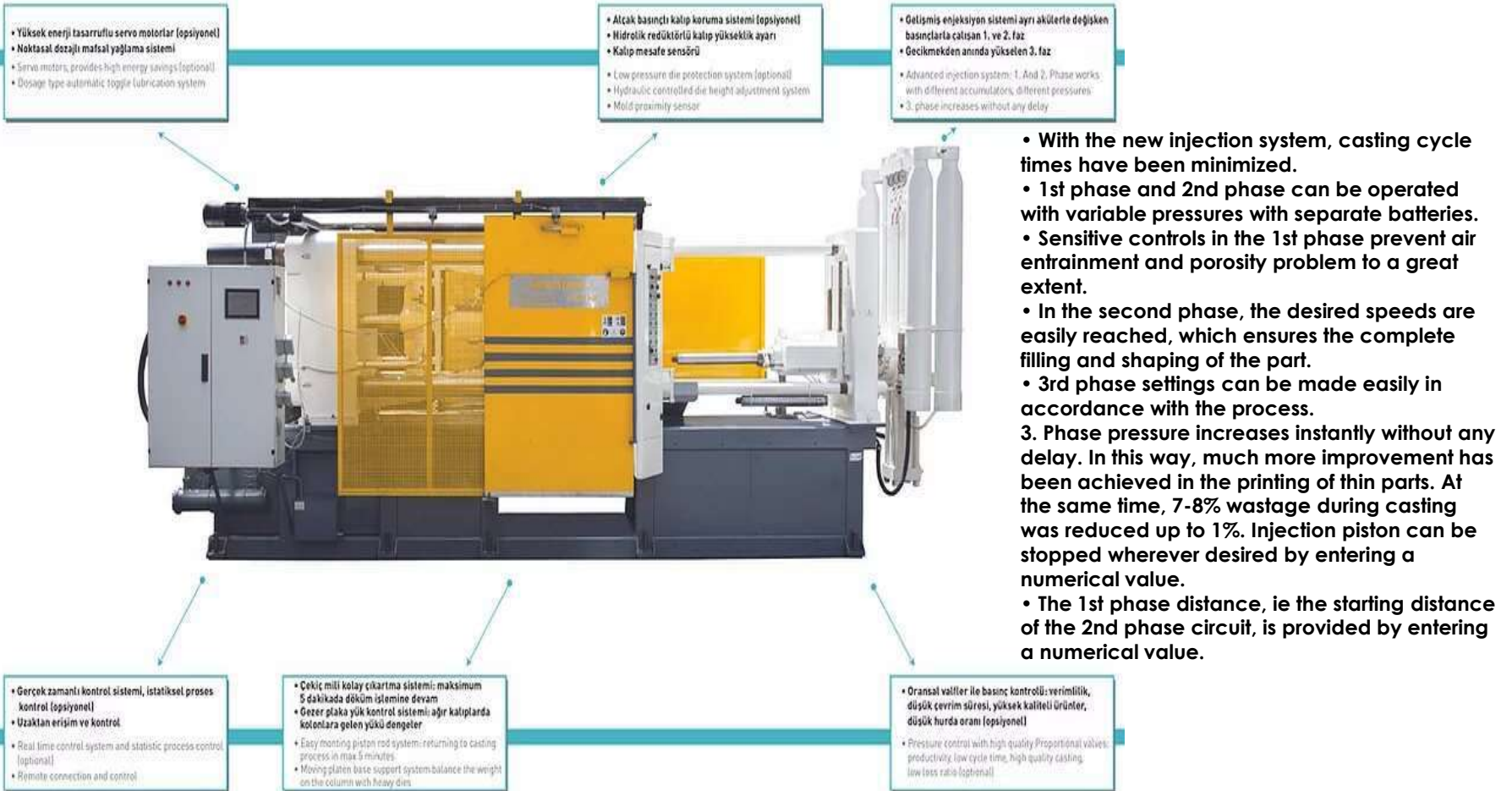


MACHINE TYPE HP 250 PK-AEP
COURSE (STROK) ADJUSTMENT 10-140 mm
COURSE (STROK) NUMBER OF HIT 44 pieces / minute
MORS DIAMETER 70 mm
KNOB SPINDLE MOST LOWING RANGE 100 mm
KNOB SPINDLE MOVEMENT Cir System.
COACH SIZE 520 x 280 x 695 mm
TABLE SIZE 800X1000 mm
TABLE HOLE DIAMETER 250 mm
DISTANCE BETWEEN BODY BODY TO TABLE CENTER 395 mm
DISTANCE BETWEEN TABLE AND COACH 580 mm
DISTANCE BETWEEN ADDITIONAL TABLE AND COC 460 mm
CLUTCH WORKING PRESSURE 6 bar
CONNECTABLE TOP MOLD SIZE and WEIGHT

280 x 520 mm
CRANKSHAFT STOP POINT Upper dead point
MAIN VOLTAGE 400 V - 3 phase - 50hz
CONTROL VOLTAGE 24 V
ELECTRONIC COUNTER
FUSE SYSTEM Mechanical Disc
LUBRICATION SYSTEM Manual / Automatic (optional)
GREASE OIL USED TYPE 0 number
CONDITIONING OIL Shell morlina-10
PRESS HEIGHT 3400 mm
PRESS DEPTH 2600 mm
PRESS WIDTH 1850 mm
APPROXIMATE WEIGHT 11000 kg
ENGINE POWER 30 hp
ENGINE SPEED 1400 rpm
BODY STRUCTURE Steel Construction
OPERATING NOISE LEVEL dB
PROTECTIVE BARRIER DISTANCE 1500 mm TS EN 294
KOÇ PILLOWING SYSTEM
BEAM BARRIER AND PROTECTION SHUTTER
ADJUSTABLE NUMBER OF REVOLUTIONS SYSTEM Optional

Metal Injection Machine And Consumable Spare

Cold Chamber Metal Injection Machines (Pressure Die Casting)



Metal Injection Machine And Consumable Spare

Cold Chamber Metal Injection Machines Parts

Aluminum



Aluminum



Bronze



Metal Casting



Zamak Alloy



Stell Billet



Plastic Injection Machine And Consumable Spare

Plastic Injection Machines

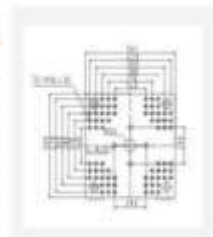


MAKİNE MODEL / MACHINE MODEL		TSP-WS 118		
TEKNOLOJİLER / TECHNOLOGIES				
Wit çapı / Screw Diameter	mm	32	38	40
Wit L/D Oranı / Screw Ratio	L/D	23,6	21	19
Wit Mesuresi / Screw Stroke	mm		130	
Enjektör Hattı / Shot Volume	cm ³	130	165	203
Enjektör Ağırlığı / Shot Weight (PS)	g	119	150	185
Enjektör Kapasitesi / Injection Rate	g/s	87	118	136
Enjektör Hızı / Injection Speed	mm/s		118	
Enjektör Basıncı / Injection Pressure	bar	260	150	300
Maksimum Mal Alma Hızı / Max Screw Speed	rpm		0-311	
Mal Alma Kapasitesi / Screw Capacity	kg (lb)	11	12,8	15,4
TEKNOLOJİLER / TECHNOLOGIES				
Kilme Kuvveti / Clamping Force	kl		1000	
Kalıp Açma Mesuresi / Opening Stroke	mm		320	
Kalınlar Arası Mesafe / Space Between Tie Bars	mm		370 X 370	
Kalıp Kalınlığı / Mold Thickness (max mm)	mm		400-150	
Enjektör Hattı / Ejector Stroke	mm		100	
Enjektör Kuvveti / Ejector Force	kl		33	
Enjektör Numarası / No. Of Ejector	Pc		5	
TEKNOLOJİLER / TECHNOLOGIES				
Silindirik Sistem Basıncı	MPa		10	
Pompa Kapasitesi / Pump Capacity	cc		40	
Servis Motor Gücü / Servo Motor Power	kW		18	
Isıtma Gücü / Heating Capacity	kW		7,2 / 10,2	
TEKNOLOJİLER / TECHNOLOGIES				
Makine Ölçüsü / Machine Dimension (dlxHxP)	M		44 X 1,2 X 1,9	
Makine Ağırlığı / Machine Weight	t		3,5	

Makine Ölçüleri / Machine Dimension



	TSP-WS 118
A	520
B	380
C	470,5
D	390
E	1180
A	320
b	150-400
f	10
c	120
g	30
e	320
B	1



Plastic Injection Machine And Consumable Spare

Plastic Injection Machines Parts



Automation Machine And Consumable Spare Parts

Shrink Packaging Automation



Technical Specifications

- Selection of different packing sequence
- PLC control
- Servo motion axes
- Temperature control oven

Four De Type Tunnel



Technical Specifications

- Multifunction CNC control panel
- Natural gas or electrical heating system
- Conveyor wire band made from AISI 304
- Serpentine and circulation fans is made from AISI 310
- Maximum heating 620 °C
- Adjustable Band Speed

Spray Gun Line



Technical Specifications

- Cardan conveyor designed as a ring
- 3 pcs of painting cabin stainless or galvanized
- 1 pcs of drying cabin stainless or galvanized
- 1 pcs of cooling unit
- Natural gas or electrical heating type
- Recipe system (optional)
- Cardan conveyor with a warehouse system special to or company
- Automatic loading and unloading (optional)
- Automatic painting robot (optional)

Ventilation, Dust Collection, Compressor, Generator

Industrial Ventilation Machine

Technical Specification



General features



ECONOMIC

Bomaksan branded PLTF Jet-Pulse Pleated Bag Filter units are more economical than traditional Bag Filter units as they provide the same filtration area in smaller filter cabinets.



FLEXIBILITY

Bomaksan branded PLTF Jet-Pulse Pleated Bag Filter units can be arranged by our engineer staff, if requested, in accordance with the layout plan of your factory.



SUPERIOR FILTRATION

Bomaksan brand PLTF Jet-Pulse Pleated Bag Filter units provide much superior filtration compared to traditional Bag Filter units thanks to their innovative pleated bag filters.



AUTOMATIC CLEANING

Thanks to the highly efficient automatic cleaning system designed by Bomaksan as part of the R&D Project, while the consumption of compressed air decreases, the filter life increases.



STURDY AND SEALING

Cabinet side and top covers, reinforcement profiles, chassis and carrier legs are all manufactured in suitable sheet thicknesses by combining bolts and nuts to ensure their sealing.

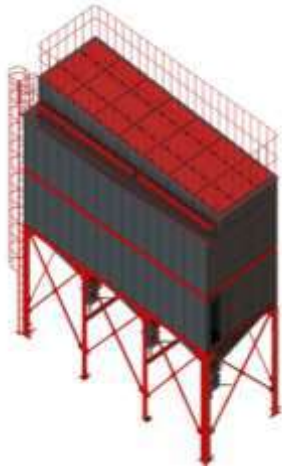


EASY MAINTENANCE

Bomaksan brand Jet-Pulse Pleated Bag Filter units save up to 50% time in filter replacement compared to bag filters thanks to their innovative designs.

Ventilation, Dust Collection, Compressor, Generator

Jet Pulse Bag Filter



Technical Specification

General features



FLEXIBILITY

Bomaksan brand PTF Jet-Pulse Bag Filter units can be arranged by our engineer staff, if requested, in accordance with the layout plan of your factory.



SPECIAL FILTRATION SOLUTIONS

Bomaksan brand PTF Jet-Pulse Bag Filter units are specially designed for demanding filtration conditions. Pleated bag filters, which offer economic solutions, are preferred under conditions that are not efficient.



AUTOMATIC CLEANING

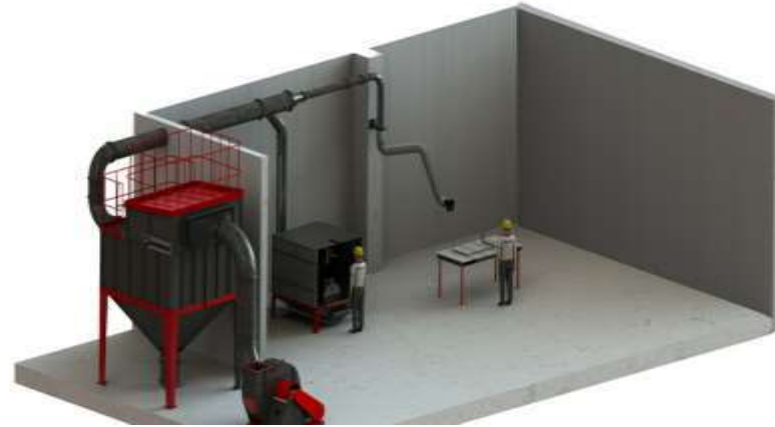
Thanks to the highly efficient automatic cleaning system designed by Bomaksan as part of the R&D Project, while the consumption of compressed air decreases, the filter life increases.



STURDY AND SEALING

Cabinet side and top covers, reinforcement profiles, chassis and carrier legs are all manufactured in suitable sheet thicknesses by combining bolts and nuts to ensure their sealing.

Jet Pulse Cartridge Filter



Technical Specification

General features



MODULAR

Bomaksan brand PKF units have a modular structure. When you want to increase your filter capacity, you can increase your capacity by adding a new one next to your old PKF device.



FLEXIBILITY

Bomaksan brand PKF Jet-Pulse Cartridge Filter units can be designed by Bomaksan engineers, if requested, in accordance with the layout plan of your factory.



EASY INSTALLATION

Bomaksan brand PKF Jet-Pulse Cartridge Filter units are shipped to your factory in a way that can be easily installed and put into operation quickly thanks to their special design.



AUTOMATIC CLEANING

Thanks to the highly efficient automatic cleaning system designed by Bomaksan as part of the R&D Project, while the consumption of compressed air decreases, the filter life increases.



STURDY AND SEALING

Cabinet side and top covers, reinforcement profiles, chassis and carrier legs are all manufactured in suitable sheet thicknesses by combining bolts and nuts to ensure their sealing.



EASY MAINTENANCE

Bomaksan brand Jet-Pulse Cartridge Filter units allow you to easily discharge dust bucket and change filters thanks to their ergonomic design.

Ventilation, Dust Collection, Compressor, Generator Industrial Ventilation Machine Parts

Centrifugal Fan



Pulse Valve and Air Tube



Fan Control Panel



Solenoid Driver with Different Pressure Control It



Air Lock (Rotary Valve) In



Pilot Box



Silencer



Compressed Air Regulator



Ventilation, Dust Collection, Compressor, Generator

Diesel Generator



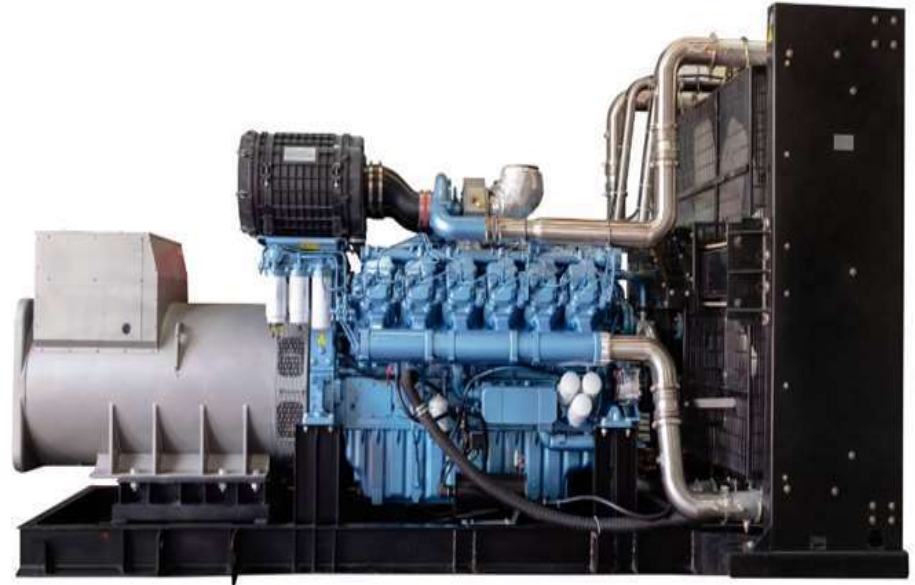
Technical Spesification

Generator Model	Diesel Engine	Number of Cylinders	Alternator	Prime (kVA / kW)		Standby (kVA / kW)	
ARK-P10 L5	403A-11G1	3	E1X13S C / 4	9	7,2	10	8
ARK-P15 L5	403A-15G1	3	E1X13M E / 4	13	10,4	14	11,2
ARK-P22 L5	404A-22G1	4	SLT18 MD	20	16	22	17,6
ARK-P33 L5	1103A-33G	3	PRO18S C / 4	30	24	33	26,4
ARK-P50 L5	1103A-33TG1	3	PRO18M E / 4	42	33,6	48	38,4
ARK-P70 L5	1103A-33TG2	3	PRO18L G / 4	60	48	65	52
ARK-P75 L5	1104A-44TG1	4	PRO22S B / 4	66	52,8	74	59,2
ARK-P90 L5	1104A-44TG2	4	PRO22S C / 4	81	64,8	90	72
ARK-P110 L5	1104C-44TAG2	4	PRO22S D / 4	one hundred	80	110	88
ARK-P150 L5	1106A-70TG1	6	PRO22M E / 4	130	104	147	117,6
ARK-P165 L5	1106A-70TAG2	6	PRO22M F / 4	150	120	165	132
ARK-P200 L5	1106A-70TAG3	6	PRO28S A / 4	180	144	200	160
ARK-P220 L5	1106A-70TAG4	6	PRO28S B / 4	200	160	220	176

Ventilation, Dust Collection, Compressor, Generator

Baudouin Serisi Dizel Jeneratörler

Generator Model	Diesel Engine	Number of Cylinder	Alternator	Prime (MVA / MW)		Standby (MVA / MW)	
ARK-B20 LS	4M06G25/5	4	ETK13MF/4	16	12,8	18	14,4
ARK-B25 LS	4M06G25/5	4	SLT18 MD	20	16	23	18,4
ARK-B30 LS	4M06G25/5	4	PRO185 B/4	20	25	27	21,6
ARK-B35 LS	4M06G35/5	4	PRO185 C/4	30	24	34	27,2
ARK-B45 LS	4M06G44/5	4	PRO18M E/4	40	32	45	36
ARK-B50 LS	4M06G50/5	4	PRO18M L/4	42	33,6	48	38,4
ARK-B55 LS	4M06G50/5	4	PRO18L F/4	48	38,4	52	41,6
ARK-B60 LS	4M06G55/5	4	PRO18L G/4	52	41,6	58	46,4
ARK-B75 LS	4M11G70/5	4	PRO225 B/4	66	52,8	74	59,2
ARK-B90 LS	4M11G90/5	4	PRO225 C/4	82	65,6	90	72
ARK-B115 LS	4M11G120/5	4	PRO225 D/4	100	80	113	90,4
ARK-B125 LS	4M11G120/5	4	PRO22M E/4	110	88	125	100
ARK-B150 LS	6M11G150/5	6	PRO22M E/4	130	104	147	117,6
ARK-B160 LS	6M11G150/5	6	PRO22M F/4	145	116	160	128
ARK-B170 LS	6M11G165/5	6	PRO22M F/4	150	120	168,5	133,6



Hydraulic, Pneumatic Machine

Vertical Hydraulic Pipe Tension Unit



Vertical Hydraulic Pipe Tension Unit

- Hydraulic unit with solenoid valve, oil cooled, safety valve:
- Motor: 380V, 3KW.
- Manual control: 24V.
- Working pressure: 350 bar.
- Hydraulic cylinder:
- Capacity: 60 tons.
- Stroke: 100 mm.
- Extractor:
- Type: Jaw type.
- Tube Diameter Capacity: 4 "(101.6mm)
- Mirror thickness capacity: 20-35mm.

Hydraulic Leather Burning Press



Hydraulic Leather Burning Press

CHARACTERISTICS:

Machine that prints on fabric and leather is used in PID controlled thermos for even heat distribution. Our machine, which does relief and crushing in large sizes, is designed to achieve maximum efficiency with minimum energy.



**GTIP MACHINE
COMPANY**

Services & Consumable Spare Parts

GTIP MACHINE

Yakuplu Mah.Birlik Cad. Beysan san.sif. No: 32 / 44 BEYLİKDÜZÜ, İSTANBUL- TURKEY

Tél: 0090 212 422 57 55 Fax: 0090212 422 57 56 MOB : +90 507 537 18 43

23

www.gtipmachine.com